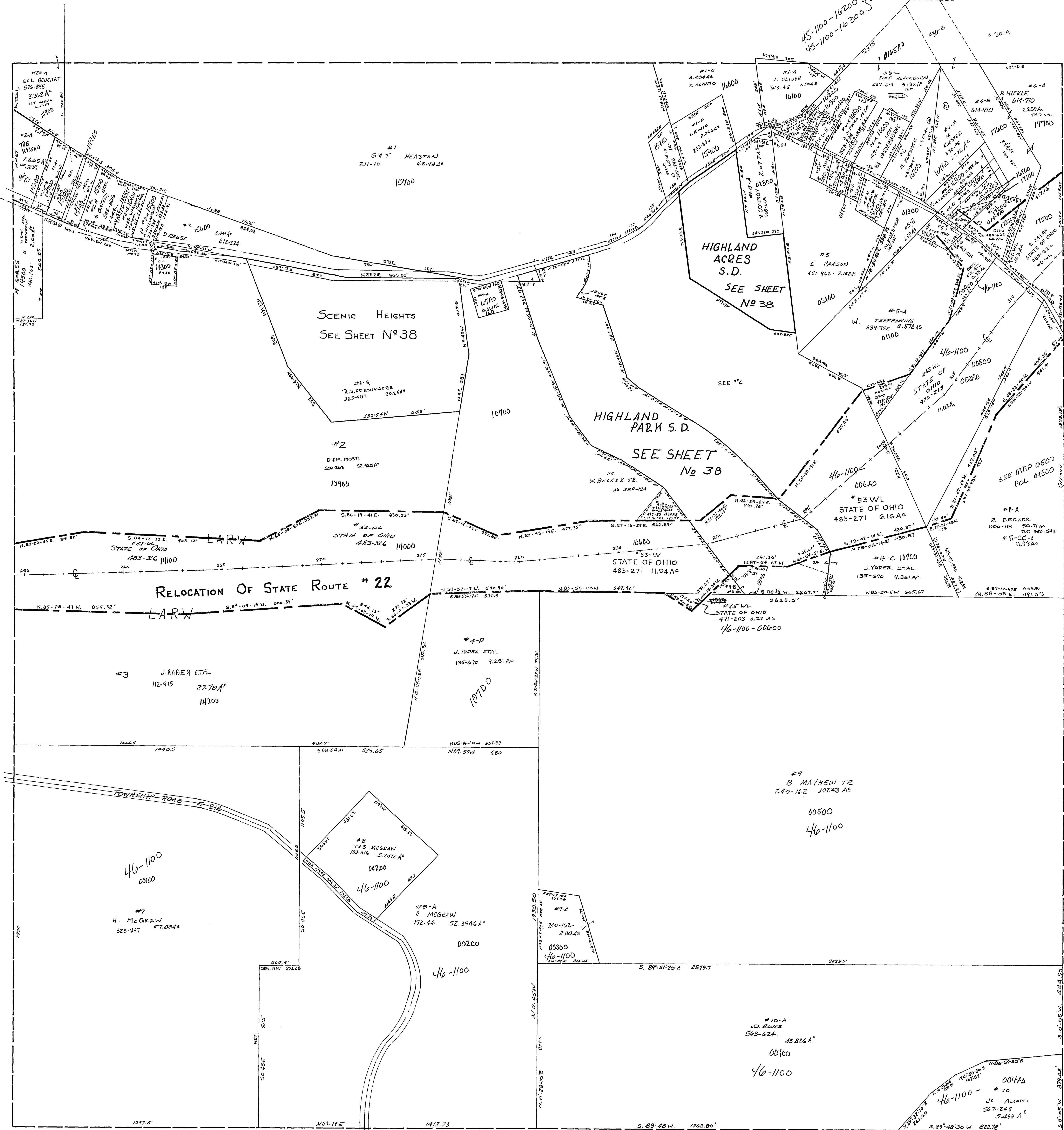


H6-1100

45-1100-16200 ONLY ONES 1-2  
45-1100-16300 ONLY 45-1100-

#2-B TAD SHYKORKE 524.59' 70.41'  
#2-C " " " " 53.57' 10.57' A'  
#2-A " " " " 107.2' A'  
#2-C-1 " " " " 107.2' A'  
#2-C-2 " " " " 107.2' A'  
#2-C-3 " " " " 107.2' A'  
#2-C-4 " " " " 107.2' A'  
#2-C-5 " " " " 107.2' A'  
#2-C-6 " " " " 107.2' A'  
#2-C-7 " " " " 107.2' A'  
#2-C-8 " " " " 107.2' A'  
#2-C-9 " " " " 107.2' A'  
#2-C-10 " " " " 107.2' A'  
#2-C-11 " " " " 107.2' A'  
#2-C-12 " " " " 107.2' A'  
#2-C-13 " " " " 107.2' A'  
#2-C-14 " " " " 107.2' A'  
#2-C-15 " " " " 107.2' A'  
#2-C-16 " " " " 107.2' A'  
#2-C-17 " " " " 107.2' A'  
#2-C-18 " " " " 107.2' A'  
#2-C-19 " " " " 107.2' A'  
#2-C-20 " " " " 107.2' A'



#6-C-1 RY HICKLE 489.124 0.153 A'  
#6-B-1 STATE OF OHIO 420.28 0.114 A'  
#5-B-1 STATE OF OHIO 471.221 0.071 A'  
#5-C W. SHARP 653.402 0.115 A'  
#5-D E. D. MORRIS 443.197 0.206 A'  
#5-E " " " " 0.261 A'  
#6-D-1 L. OLIVER 613.48 0.071 A'  
#5-F E. E. MYRICK 327.465 0.361 A'  
#5-G " " " " 0.204 A'  
#6-H BLOOMINGDALE CHURCH 0.276 A'

WAYNE TWP.  
SEC. 11, T. 9, R. 3.  
SCALE 1"=200'